

# Regenerate NPT: 2014 - 2021



## The Rural Development Programme . . . . .

is the mechanism by which the Welsh Government delivers LEADER funding to support our countryside and rural communities. In Neath Port Talbot the following projects and feasibility studies have been approved by the Local Action Group (LAG):



**Cognition**  
**Timescale:** February  
To encourage  
contributions via  
locations, towards the  
Ponds and Afan Forest  
Volunteers Group, to

**PROJECT:** Growing Healthy Together, NPTCVS

**Timescale:** July 2016 to November 2017

To build up an interest in community growing, volunteering and locally produced food, enabling local people to develop skills through friendly workshops and training held at Rheola Walled Garden in Glynneath and at the DOVE Workshop in Banwen.



**PROJECT:** Cognition Bike Give Sustain,

2016 to June 2019

mountain bikers and walkers to make donation boxes based at various upkeep of bike tracks at Glynccorwg Park and to establish the Afan Trail maintain the tracks.

**PROJECT:** Go for IT, Age Connects NPT

**Timescale:** May 2016 to April 2019

Free classes to support adults aged 50+ get to grips with modern technology like mobile phones and computers. With help for those wanting to access information on-line, internet banking, social media, shopping and personal interest sites – like looking for and booking holidays!



**Timescale:** July 2016  
Employing a Tourism  
businesses in our  
as an attractive and  
West Wales by

**PROJECT:** Tourism Development in NPT, NPTCBC

to December 2019

Development Officer to help tourism rural wards promote Neath Port Talbot convenient base for a visit to South working with them to develop their aspirations and understanding of visitor requirements.



**PROJECT:** Working with Nature, NPTCBC

**Timescale:** August 2016 to March 2021

Run by the Countryside & Wildlife Team, to build up a bank of volunteers and community groups to take a more active role in the management of our local, natural greenspaces, whilst fostering a greater understanding and connection with the natural environment.



**PROJECT:** Past to Present, South Wales Miners Museum

**Timescale:** July 2016 to March 2020

Digitalising the museum's collection of historical artefacts and training volunteers to pass their knowledge of the coal industry's part in the culture of the Afan Valley, on to visitors.



Service with a programme of for young people

**PROJECT:** Glantawe Arena Partnership

**Timescale:**  
To provide outdoor

**PROJECT:** Promoting Public Transport to the Countryside, BayTrans

**Timescale:** February 2016 to September 2018

To encourage visitors to Neath Port Talbot valleys using public transport by mapping the attractions, activities and walks in our rural wards that are all accessible by bus.

**PROJECT:** The Engagement Retreat, Whitehead-Ross Consulting

**Timescale:** March 2016 to February 2018



Designed to add value to existing Youth provision in Neath Port Talbot's rural wards, exhilarating outdoor pursuits and activities aged 14-18.

Outdoor Education Academy, Pontardawe

September 2016 to September 2019  
educational programmes for disengaged



generation, energy transport.

**PROJECT:** Egni Rural,

**Timescale:** June 2019 to  
To secure leases for  
across NPT by carrying



**PROJECT:** Energy Local, Awel Aman Tawe

**Timescale:** June 2018 to June 2020

To employ an Energy Local Development Officer to promote sustainable and efficient measures to communities in NPT and communicate the advantages of low carbon, decentralised, locally owned efficiency and electrified heat and

Egni Co-op

March 2020

solar panels on community buildings  
out structural surveys and ensuring

grid connection at each site. These buildings and their users will benefit from cheaper electricity and the project will significantly reduce carbon emissions.



**PROJECT:** Solar and Battery, Awel Aman Tawe

**Timescale:** June 2019 to August 2021

To secure planning for a 2.2MW ground mounted solar farm, and a 5MW battery



storage facility on Mynydd y Gwrhyd located next to the two existing Awel Co-op wind turbines. Funding covered legal support to secure leases on the common land and farm where the solar is located and the planning application fee.

**PROJECT:** Mess Up The Mess, “Amplify: Trowch e Lan”

**Timescale:** August 2019 to September 2020

Working in partnership with Pontardawe Arts Centre, this Theatre Company delivered a package of activities targeted to engage local young people in creating, managing and delivering events.



they had direct  
able to experience

**PROJECT:** Caring at

**Timescale:**

Providing gift bags to have engaged with The bags included well as donated food also gave the volunteers to drop by



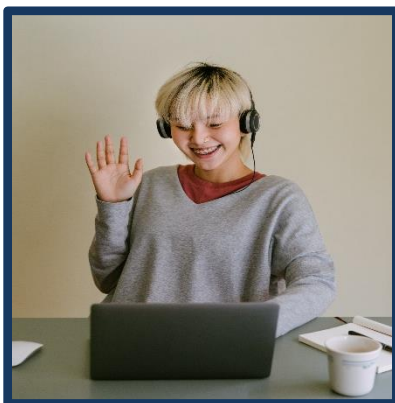
at 4 schools during lunchtimes to ensure access to a play professional and would be good value play sessions.

Christmas, Age Connects NPT

Throughout December 2020

elderly residents that Age Connects NPT since the start of the Covid19 pandemic. cards and gifts from local school children as and gifts from other community groups. It organisation a last opportunity for their

and carry out wellbeing checks on residents spending Christmas alone.



supportive  
youth workers.

**PROJECT:** Clwb ieuencid iaith Gymraeg/Welsh Language Youth Club, Neath Port Talbot Council Youth Service

**Timescale:** June 2021 to December 2021

To pilot a ‘virtual’ youth club through the medium of Welsh and provide opportunities for young people to improve their Welsh language skills through activities which will help them with team building, problem solving and personal development (with an added option of gaining formal qualifications) in a safe and environment, staffed by qualified



**PROJECT:** Return to

**Timescale:** April 2021

Funding for works to

Play, Bryn Rovers AFC

to August 2021

be carried out to the pitch area to

ensure the safety of players and spectators in terms of social distancing measures due to Covid19 restrictions.



fungi, bats

**PROJECT:** Crynant Community Forest 'Exploring the Crynant Community Council

**Timescale:** June 2021 to December 2021

Enabling local residents to learn about, and experience, wildlife and nature. They will have the opportunity to participate in activities and learn about supporting the biodiversity of the forest through taking part in surveying and learning about birds, plants, and other mammals.



education centre.

**PROJECT:** Hwb Y Gors, Awel Aman Tawe

**Timescale:** June 2021 to December 2021

Employing an Engagement Officer to take forward the development of the Hwb Y Gors centre, Cwmgors into a low carbon social enterprise, arts and

**PROJECT:** Community Food Pontardawe Arena

**Timescale:** April 2021 to Increasing well-being community to discover the grow their own produce. adults and young people where



Growing Pilot, Partnership

December 2021

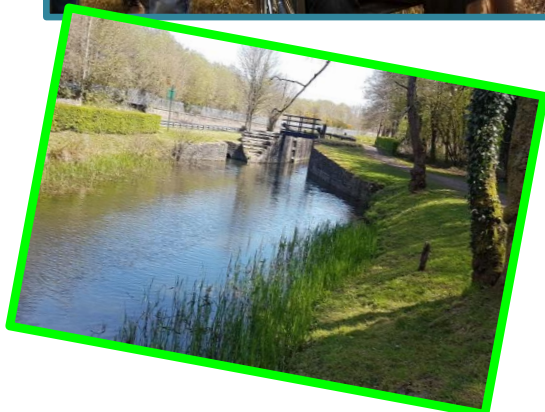
through supporting the benefits, and develop the skills, to Provision will be open to both early intervention programmes for schools will include horticultural and energy efficiency principles.



**PROJECT:** Crynant Volunteer & Support Programme, Crynant Community Association

**Timescale:** July 2021 to December 2021

To kick-start a structured community volunteer programme by employing a Volunteer Development Officer who would be appropriately trained (paid for by LEADER) and solely invested in raising the profile of a volunteer programme in order to adequately serve the elderly and vulnerable residents and also engage with the young people in the village of Crynant.



**PROJECT:** Neath Canal Biodiversity Trail, Ty Banc Canal Group

**Timescale:** July 2021 to December 2021

To increase education around biodiversity, QR codes placed along canal pathway mooring posts from Resolven to



Glynneath encouraging children to engage with educational quizzes woven into stories of wildlife characters.



This town

will

Upper Neath

**PROJECT:** Upper Neath Valley Development Project Funding Officer Pilot, Glynneath Town Council

**Timescale:** July 2021 to December 2021

project brings together four rural community councils who have formed a Cluster to employ a Development Officer whose aim will be to explore grant funding opportunities that benefit all four communities based in the Valley.

**PROJECT:** Cook  
Neath Port

**Timescale:**

To teach young people a 10 week on-line programme to prepare and cook affordable nutritiously balanced meals for themselves and their families as part of a healthier lifestyle.



Slow Learn Fast,

Talbot Council Youth Service

September 2021 to December 2021

people basic, practical cooking skills over programme, empowering them to plan, prepare and cook

**COOPERATION Projects** whereby Local Action Groups from different regions can work together to provide opportunities to improve the potential for overcoming challenges for people in Wales, UK or Europe.



**PROJECT:** Shared Visions for Common Land, European Forum for Nature Conservation and Pastoralism

**Timescale:** October 2020 to October 2021

Swansea LAG leading the project, partnered with Caerphilly, Blaenau Gwent, NPT, Merthyr Tydfil, RCT, Powys and Torfaen. To ensure that commoners and other stakeholders involved in common lands, have the best possible advantages in terms of capacity to engage with policy around Government legislation.



**PROJECT:** Prescribing Woodlands for Wellbeing:

Coed Lleol (Small Woods Association)

**Timescale:** April 2021 to December 2021

Ceredigion LAG leading the project, partnered with NPT and Cwm Tâf (Merthyr & RCT), bringing together organisations working in the field of outdoor nature-based health, with health care providers interested in green social prescribing, and to pilot the development of new digital resource as a tool for sharing experiences and learning, over geographical distance and in

times of isolation or lockdown.

**FEASIBILITY STUDIES** can be funded through LEADER to provide revenue costs for

a combination of staff time and consultancy costs to undertake background research for a specific problem or issue.



**PROJECT:** Developing Neath Abbey Ironworks, Friends of NAIW

**Timescale:** April 2018 to June 2019

An investigation into the feasibility of conserving the Ironworks through structural repairs, with the possibility of eventually opening up the site to the public to encourage visitors to the area, and increase community knowledge through research and sharing of information on this relatively unknown site of major historical interest and importance.



**PROJECT:** Transport, NPTCVS

**Timescale:** December 2017 to September 2018

On behalf of the Neath Port Talbot Transport Sub-Group to explore alternative transport models and provide a costed options appraisal for alternative ways of providing transport to meet the needs of our rural communities so that residents can access the opportunities they need to live healthy and fulfilling lives.



**PROJECT:** Green Business, NPTC, Countryside & Wildlife Team

**Timescale:** February 2016 April 2017

Exploring new approach to delivering the biodiversity requirement of building and construction developments, to redress the on-going decline in biodiversity in NPT and the delays to the planning and development process that can result from such issues. An ecological consultant was appointed to develop this new approach and to identify a number of potential compensation sites that might be used to offset the biodiversity losses or impacts that occur due to a development.



**PROJECT:** Renewable Energy Storage, Awel Aman Tawe

**Timescale:** April 2018 to December 2018

To tackle climate change and engage people in renewable energy: investigate a solar farm installation alongside the existing 4.7MW wind farm (sharing its existing grid connection), a 9MW wind farm extension to the existing site and battery storage to store excess power from the solar and/or wind extension site.



**PROJECT:** From Black to Green, Seven Sisters RFC

**Timescale:** March 2018 to September 2018



To explore the creation of a community hub as part of the club, focussing on health, wellbeing, education and tackling poverty. To research the feasibility of creating a modern community facility which could offer a range of services and activities, including a café, gym, meeting rooms that might draw in existing professionals from various health and wellbeing services.



**PROJECT:** Sarn Helen Care & Support Service, DOVE Workshops, Banwen

**Timescale:** July 2021 to August 2021

To explore the formulation of a local support service for vulnerable and elderly people who find it difficult to secure help at home. The idea would be to run a co-operative of skilled local workers and to train them in safeguarding issues and provide a hub to support them to market their services, have access to training and to manage a booking and payment system.



**PROJECT:** To explore an accessible and sustainable future for Ffynnon Capel Mair and its ancient well at Margam Park, Friends of Margam Park

**Timescale:** August 2021 to December 21

The future of this small 14<sup>th</sup> Century church and the recently discovered well is in danger. The study will identify how the site can be developed by exploring conservation through an educationally centred proposal around the site's heritage and cultural importance.

---

Supported by the Welsh Government Rural Communities – Rural Development Programme, which is financed by the European Agricultural Fund for Rural Development and the Welsh Government

